

30D Series

Sanitary Clamp, Full Port, 3-way Ball Valves (3-A approved)



3-A Approved for use in food processing and dairy applications

The Assured Automation 30 Series 3-A approved, full port, 3-way Ball valves have sanitary tri-clamp end connections. They are ideal for use in food processing and other clean service applications.

They include an ISO 5211 mounting pad for the direct mounting of actuators. Direct mount eliminates the need for extra space, weight, and cost.

A full range of accessory items are available including pneumatic and electric actuators, limit switches, solenoid valves, and manual override devices.

FEATURES

- 3-A approved
- Sanitary clamp end connections
- Seats with cavity fillers to avoid media entrapment
- Full port bore
- ISO 5211 direct mount actuator mounting pad
- Blow-out proof stem
- Latch locking handle
- Electric or pneumatic actuators available
- Solenoid valves and limit switches available

30 SERIES MODEL NUMBERING

Model Number: **X30DXXX**

Size: _____

C = 1/2"
D = 3/4"
E = 1"
G = 1 1/2"
H = 2"
I = 2 1/2"
J = 3"
K = 4"

Flow Plan: _____

A, B, D, E, F, G, H, I, J, K, M
(see below)

Actuator: _____

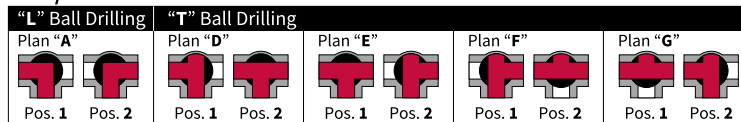
A variety of actuators with accessories are available:

- Pneumatic**
- spring return or direct acting
 - NAMUR solenoid valves
 - push fittings
 - limit switches
 - positioners
- Electric**
- various IP ratings and voltages
 - modulating or on/off

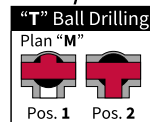
Manual
- standard lever or lockable

FLOW PLANS

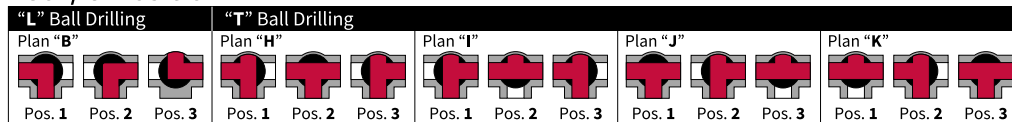
90° / 2-Position



180° / 2-Position



180° / 3-Position



TEMPERATURE RANGE

-4°F to 392°F
(see P/T curve on left)

PRESSURE RANGE

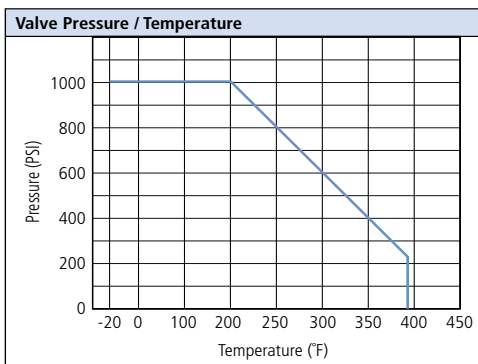
1000 psi WOG
Note: clamp end is limited by the type of clamp used (see P/T curve on left)

SPECIAL OPTIONS

- Anti-static device

TYPICAL APPLICATIONS

- Dairy
- Water bottling
- Brewing
- Flavor & fragrance
- Food and Beverage



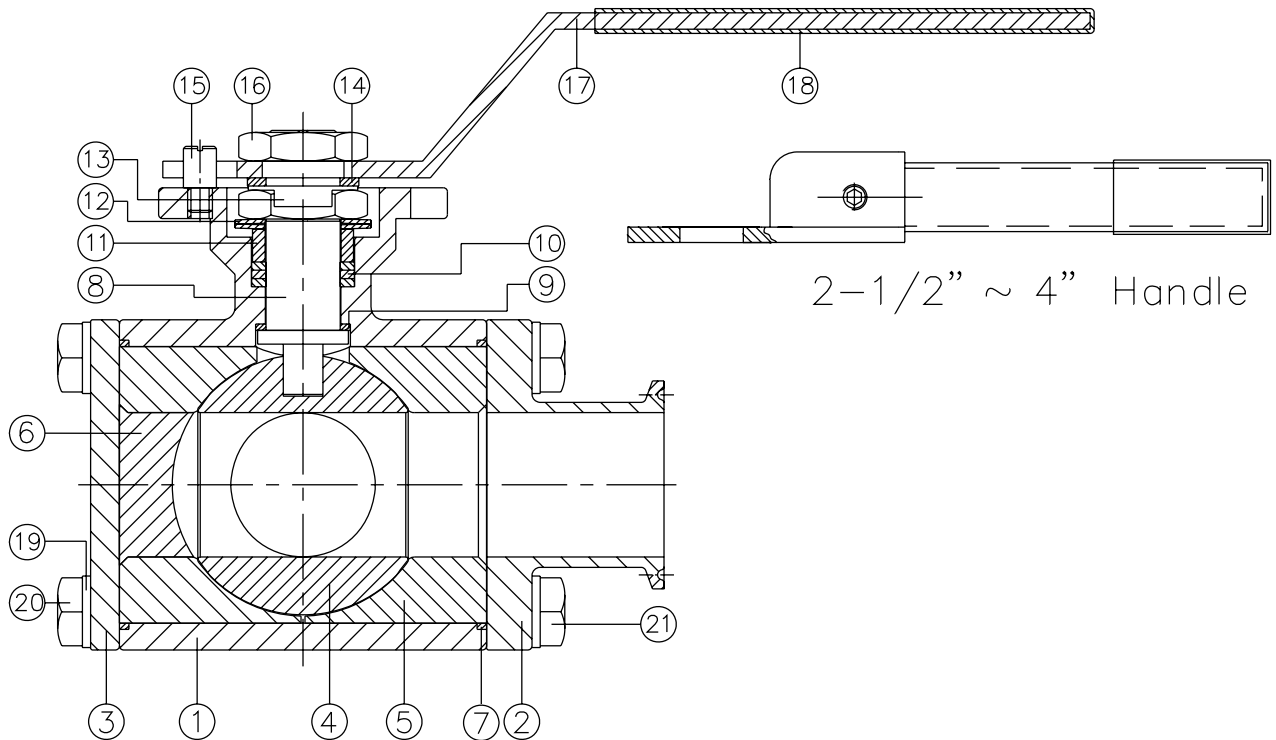
30 Series

Sanitary Clamp End, Full Port 3-way Ball Valves (Parts and Materials Details)



*3-A Approved for use in
food processing applications*

PARTS & MATERIALS



Item	Part	Material
1	BODY	ASTM A351-CF8M
2	CAP	
3	FLAT CAP	
4	BALL	ASTM A351-CF8M
5	SEAT A	PTFE
6	SEAT B	
7	SEAL	PTFE
8	STEM	ASTM A276-316
9	THRUST WASHER	PTFE
10	PACKING	
11	GLAND RING	AISI 304

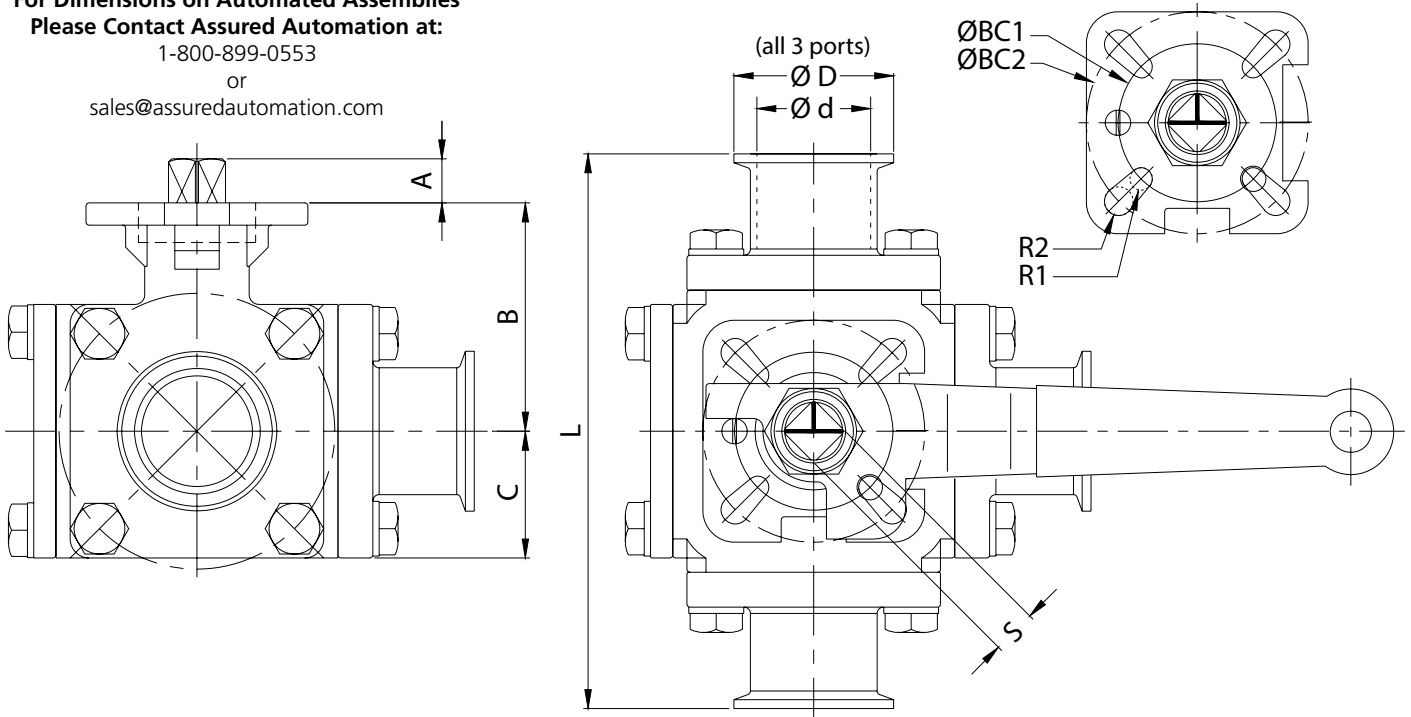
Item	Part	Material
12	BELLEVILLE WASHER	AISI 301
13	LOCKING WASHER	AISI 304
14	FLAT WASHER	
15	STOP PIN	
16	STEM NUT	
17	HANDLE	PVC
18	HANDLE SLEEVE	
19	SPRING WASHER	AISI 304
20	BOLT A	
21	BOLT B	

30 Series

Sanitary Clamp End, Full Port 3-way Ball Valves with Manual Lever

(Dimensions in inches)

For Dimensions on Automated Assemblies
Please Contact Assured Automation at:
1-800-899-0553
or
sales@assuredautomation.com



DIMENSIONS, WEIGHTS & SPECIFICATIONS (in inches except where noted)

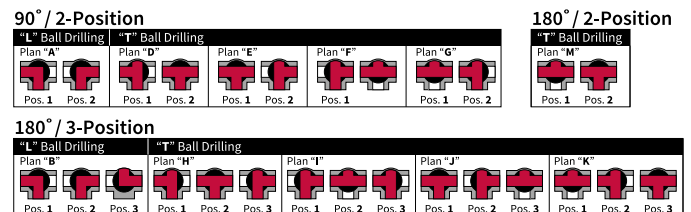
Size	A	B	C	L	S (mm)	ISO 5211	ØD	Ød	ØBC1	ØBC2	R1	R2	Wt. (lbs.)	Model No.
1/2"	0.35	1.75	0.93	4.65	9	F03/04	1.00	0.37	1.42	1.65	0.11	0.11	3.5	C30D*XM
3/4"	0.35	1.89	1.02	5.00	9	F03/04	1.00	0.62	1.42	1.65	0.12	0.12	4.2	D30D*XM
1"	0.43	2.32	1.20	6.00	11	F04/05	1.98	0.87	1.65	1.97	0.14	0.14	6.8	E30D*XM
1-1/2"	0.55	2.83	1.57	6.89	14	F05/07	1.98	1.38	1.97	2.76	0.14	0.18	12.6	G30D*XM
2"	0.55	3.23	1.97	7.48	14	F05/07	2.53	1.87	1.97	2.76	0.14	0.18	19.7	H30D*XM
3"	0.91	4.94	2.01	10.24	22	F10/12	3.58	2.87	4.02	4.92	0.22	0.26	44.3	J30D*XM
4"	0.70	7.28	4.00	13.00	17	F07/10	4.59	3.83	2.76	4.02	0.22	0.26	120.0	K30D*XM

* = A, D, E, F, G, H, I, J, K, M (Flow Plan see below)

VALVE FEATURES

- 3-A approved
- Sanitary clamp end connections
- Seats with cavity fillers to avoid media entrapment
- Full port bore
- ISO 5211 direct mount actuator mounting pad
- Blow-out proof stem
- Latch locking handle

FLOW PLANS



VALVE SPECIFICATIONS

Temperature Range:

-4°F to 392°F

(see PIT curve on page 1)

Pressure:

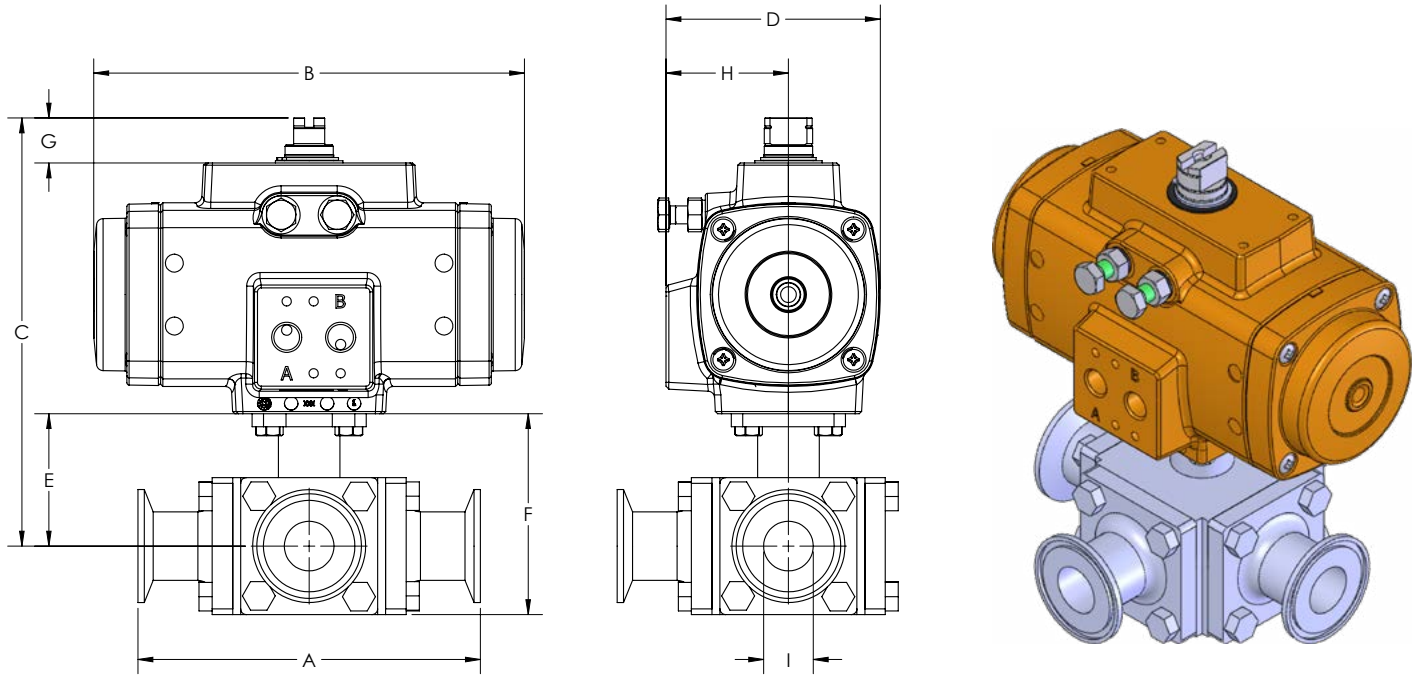
1000 psi WOG

Note: clamp end is limited by the type of clamp used
(see PIT curve on page 1)

30DX_XFDA

Stainless steel, 3-way ball valves with double acting pneumatic actuator

(Sanitary clamp end connections with filled cavities, actuators are sized for 400psi pressure differential)



DIMENSIONS, WEIGHTS & SPECIFICATIONS

Size	A	B	C	D	E	F	G	H	I	Actuator	Wt. (lbs.)	Model No.
80 psi Minimum Actuator Air Supply = 8D												
1/2"	4.65	6.54	6.44	3.23	1.75	2.68	0.79	1.91	0.37	FDA25	6.6	C30D*XF8D
3/4"	5.00	6.54	6.58	3.23	1.89	2.91	0.79	1.91	0.62	FDA25	7.3	D30D*XF8D
1"	6.00	7.55	7.79	3.74	2.32	3.52	0.79	2.15	0.87	FDA40	11.4	E30D*XF8D
1 1/2"	6.89	8.53	8.77	4.09	2.83	4.40	0.79	2.28	1.87	FDA65	18.8	G30D*XF8D
2"	7.48	8.53	9.17	4.09	3.23	5.20	0.79	2.28	2.87	FDA65	25.9	H30D*XF8D
3"	10.24	8.80	12.22	5.28	4.94	6.95	0.79	2.72	3.83	FDA150	55.1	J30D*XF8D
4"	13.00	10.58	16.34	6.50	7.28	11.28	0.79	3.35	3.83	FDA350	142.0	K30D*XF8D
60 psi Minimum Actuator Air Supply = 6D												
1/2"	4.65	6.54	6.44	3.23	1.75	2.68	0.79	1.91	0.37	FDA25	6.6	C30D*XF6D
3/4"	5.00	6.54	6.58	3.23	1.89	2.91	0.79	1.91	0.62	FDA25	7.3	D30D*XF6D
1"	6.00	7.55	7.79	3.74	2.32	3.52	0.79	2.15	0.87	FDA40	11.4	E30D*XF6D
1 1/2"	6.89	8.53	8.77	4.09	2.83	4.40	0.79	2.28	1.38	FDA65	18.8	G30D*XF6D
2"	7.48	9.72	9.45	4.53	3.23	5.20	0.79	2.50	1.87	FDA100	27.4	H30D*XF6D
3"	10.24	10.07	12.46	5.28	4.94	6.95	0.79	2.83	2.87	FDA200	57.5	J30D*XF6D
4"	13.00	10.58	16.34	6.50	7.28	11.28	0.79	3.35	3.83	FDA350	142.0	K30D*XF6D

VALVE FEATURES

- 3-A approved
- Sanitary clamp end connections
- Seats with cavity fillers to avoid media entrapment
- Full port bore
- ISO 5211 direct mount actuator mounting pad
- Blow-out proof stem
- Electric or pneumatic actuators available
- Solenoid valves and limit switches available

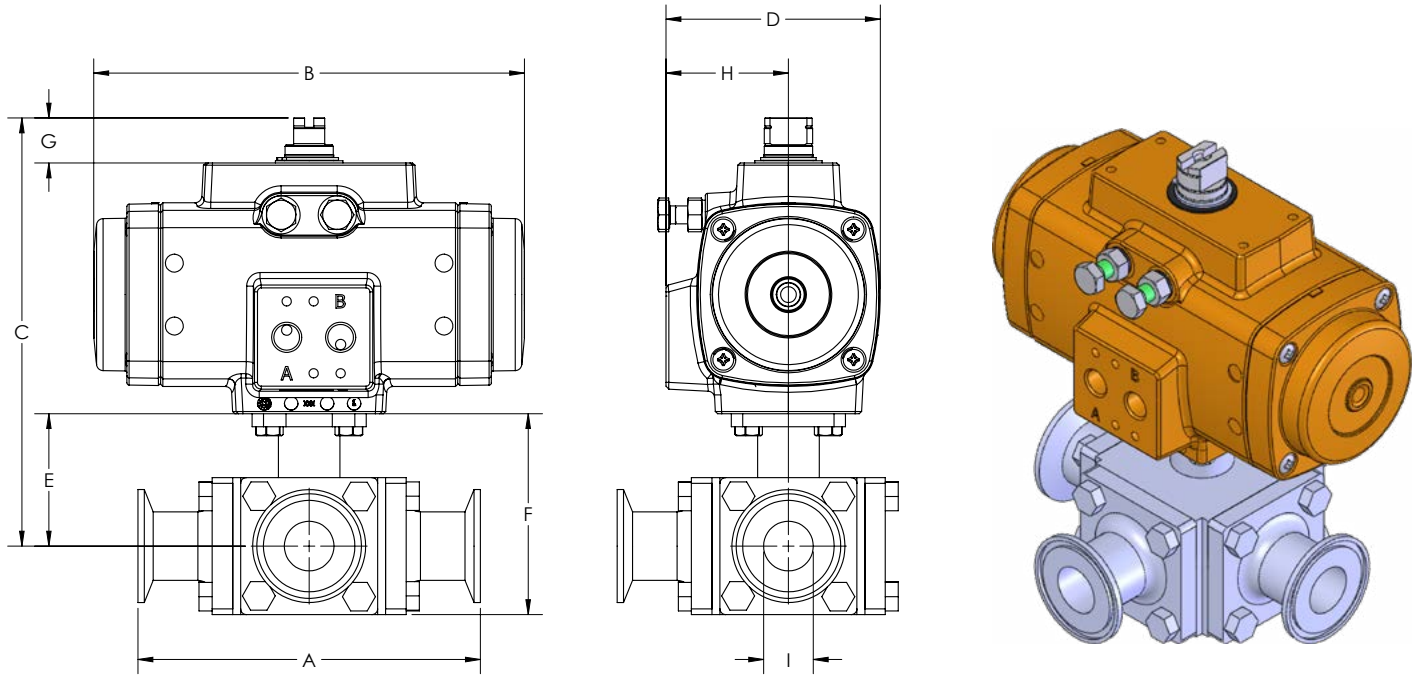
PNEUMATIC ACTUATOR FEATURES

- F Series double acting rack and pinion actuator.
- Corrosion resistant coating
- NAMUR solenoid mounting pad, ISO 5211 mounting standard
- Visual position indicators
- High duty cycle
- Permanent lubrication
- Temperature range: -4°F to 175°F

30DX_XFSR

Stainless steel, 3-way ball valves with spring return pneumatic actuator

(Sanitary clamp end connections with filled cavities, actuators are sized for 400psi pressure differential)



DIMENSIONS, WEIGHTS & SPECIFICATIONS

Size	A	B	C	D	E	F	G	H	I	Actuator	Wt (lbs.)	Model No.
80 psi Minimum Actuator Air Supply = 85												
1/2"	4.65	6.54	6.44	3.23	1.75	2.68	0.79	1.91	0.37	FSA25-4	6.6	C30D*XF8S
3/4"	5.00	6.54	6.58	3.23	1.89	2.91	0.79	1.91	0.62	FSA25-4	9.3	D30D*XF8S
1"	6.00	8.53	8.26	4.09	2.32	3.52	0.79	2.28	0.87	FSA65-4	14.1	E30D*XF8S
1 1/2"	6.89	11.97	10.11	5.00	2.83	4.40	0.79	2.72	1.38	FSA150-4	27.2	G30D*XF8S
2"	7.48	11.97	10.51	5.00	3.23	5.20	0.79	2.72	1.87	FSA150-4	34.3	H30D*XF8S
3"	10.24	15.15	14.00	6.50	4.94	6.95	0.79	3.35	2.87	FSA350-4	76.3	J30D*XF8S
4"	13.00	18.73	18.78	7.83	7.28	11.28	1.18	4.02	3.83	FSA600-4	182.0	K30D*XF8S
60 psi Minimum Actuator Air Supply = 65												
1/2"	4.65	6.54	6.44	3.23	1.75	2.68	0.79	1.91	0.37	FSA25-3	6.6	C30D*XF6S
3/4"	5.00	7.55	7.36	3.74	1.89	2.91	0.79	2.15	0.62	FSA40-3	9.3	D30D*XF6S
1"	6.00	8.53	8.26	4.09	2.32	3.52	0.79	2.28	0.87	FSA65-3	14.1	E30D*XF6S
1 1/2"	6.89	11.97	10.11	5.00	2.83	4.40	0.79	2.72	1.38	FSA150-3	27.2	G30D*XF6S
2"	7.48	11.97	10.51	5.00	3.23	5.20	0.79	2.72	1.87	FSA150-3	34.3	H30D*XF6S
3"	10.24	18.73	16.44	7.83	4.94	6.95	1.18	4.02	2.87	FSA600-3	106.3	J30D*XF6S
4"	13.00	20.35	18.66	9.10	7.28	11.28	1.18	4.96	3.83	ESA950-3DSA	205.0	K30D*XF6S

VALVE FEATURES

- 3-A approved
- Sanitary clamp end connections
- Seats with cavity fillers to avoid media entrapment
- Full port bore
- ISO 5211 direct mount actuator mounting pad
- Blow-out proof stem
- Electric or pneumatic actuators available
- Solenoid valves and limit switches available

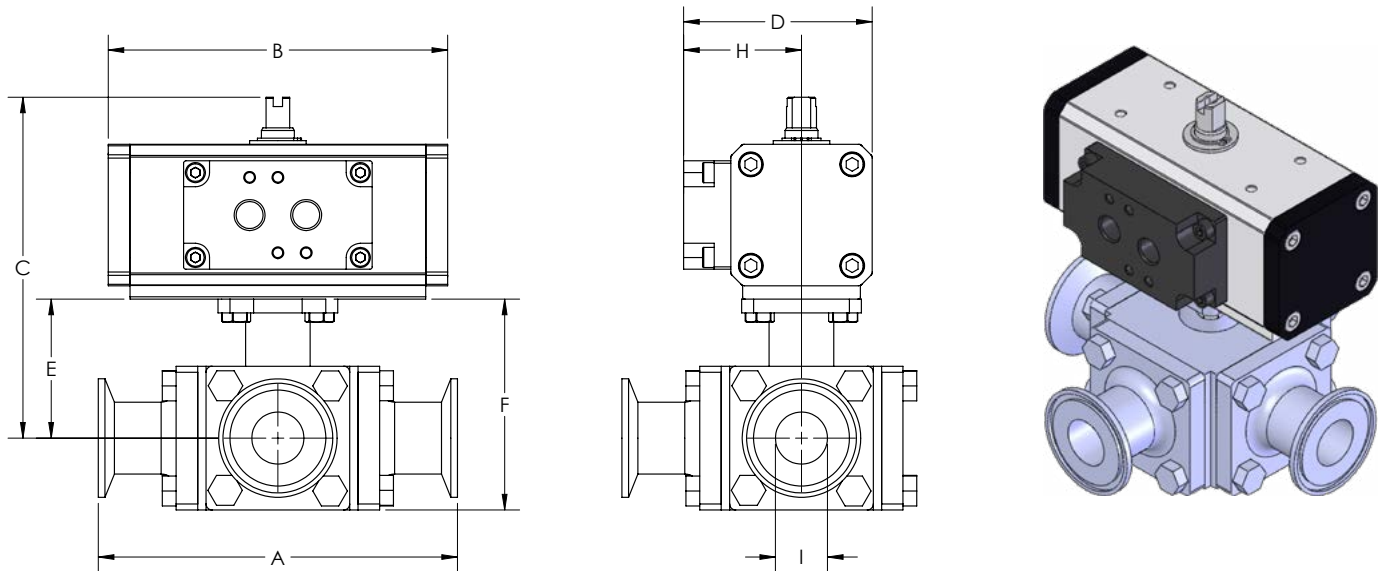
PNEUMATIC ACTUATOR FEATURES

- F Series spring return rack and pinion actuator.
- Corrosion resistant coating
- NAMUR solenoid mounting pad, ISO 5211 mounting standard
- Visual position indicators
- High duty cycle
- Permanent lubrication
- Temperature range: -4°F to 175°F

30DX_XODA

Stainless steel, 3-way ball valves with double acting pneumatic actuator

(Sanitary clamp end connections with filled cavities, actuators are sized for 400psi pressure differential)



DIMENSIONS, WEIGHTS & SPECIFICATIONS

Size	A	B	C	D	E	F	G	H	I	Actuator	Wt (lbs.)	Model No.
80 psi Minimum Actuator Air Supply = 8D												
1/2"	4.65	4.53	4.59	2.68	1.75	2.68	0.79	1.34	0.37	PD015	4.15	C30D*X08D
3/4"	5.00	5.12	5.04	2.96	1.89	2.91	0.79	1.48	0.62	PD030	6.40	D30D*X08D
1"	6.00	5.67	5.70	3.15	2.32	3.52	0.79	1.58	0.87	PD045	9.56	E30D*X08D
1 1/2"	6.89	6.65	6.67	3.62	2.83	4.40	0.79	1.81	1.38	PD090	16.68	G30D*X08D
2"	7.48	6.65	7.07	3.62	3.23	5.20	0.79	1.81	1.87	PD090	23.78	H30D*X08D
60 psi Minimum Actuator Air Supply = 6D												
1/2"	4.65	5.12	4.90	2.96	1.75	2.68	0.79	1.48	0.37	PD030	5.70	C30D*X06D
3/4"	5.00	5.12	5.04	2.96	1.89	2.91	0.79	1.48	0.62	PD030	6.40	D30D*X06D
1"	6.00	5.67	5.70	3.15	2.32	3.52	0.79	1.58	0.87	PD045	9.56	E30D*X06D
1 1/2"	6.89	6.65	6.67	3.62	2.83	4.40	0.79	1.81	1.38	PD090	16.68	G30D*X06D
2"	7.48	7.24	7.41	3.94	3.23	5.20	0.79	1.97	1.87	PD120	34.3	H30D*X06D

VALVE FEATURES

- 3-A approved
- Sanitary clamp end connections
- Seats with cavity fillers to avoid media entrapment
- Full port bore
- ISO 5211 direct mount actuator mounting pad
- Blow-out proof stem
- Electric or pneumatic actuators available
- Solenoid valves and limit switches available

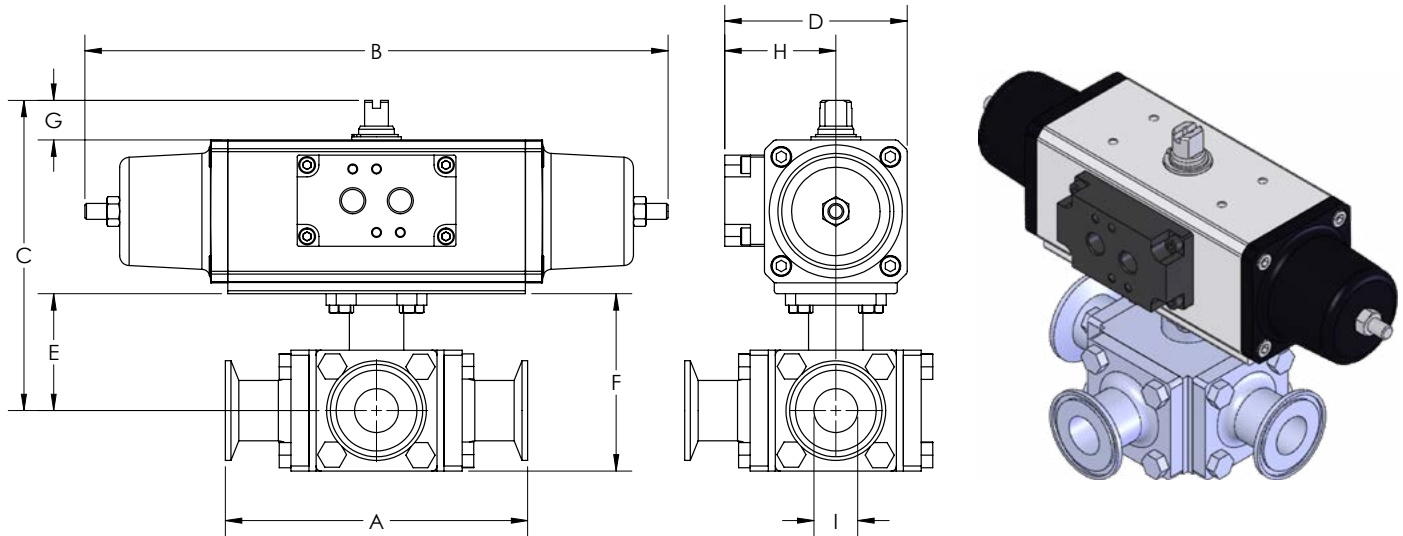
PNEUMATIC ACTUATOR FEATURES

- O Series double acting dual scotch yoke actuator.
- Corrosion resistant coating
- NAMUR solenoid mounting pad, ISO 5211 mounting standard
- Visual position indicators
- High duty cycle
- Permanent lubrication
- Temperature range: -4°F to 175°F

30DX_XOSR

Stainless steel, 3-way ball valves with double acting pneumatic actuator

(Sanitary clamp end connections with filled cavities, actuators are sized for 400psi pressure differential)



DIMENSIONS, WEIGHTS & SPECIFICATIONS

Size	A	B	C	D	E	F	G	H	I	Actuator	Wt (lbs.)	Model No.
80 psi Minimum Actuator Air Supply = 8S												
1/2"	4.65	9.45	5.30	3.35	1.75	2.68	0.79	1.675	0.37	PS03080	7.91	C30D*X08S
3/4"	5.00	9.45	5.44	3.35	1.89	2.91	0.79	1.675	0.62	PS03080	8.61	D30D*X08S
1"	6.00	11.57	6.16	3.62	2.32	3.52	0.79	1.810	0.87	PS04580	12.09	E30D*X08S
1 1/2"	6.89	14.06	7.79	4.33	2.83	4.40	1.18	2.165	1.38	PS09080	22.74	G30D*X08S
2"	7.48	14.65	8.58	4.73	3.23	5.2	1.18	2.365	1.87	PS12080	34.47	H30D*X08S
60 psi Minimum Actuator Air Supply = 6S												
1/2"	4.65	9.45	5.30	3.35	1.75	2.68	0.79	1.675	0.37	PS03060	7.91	C30D*X06S
3/4"	5.00	9.45	5.44	3.35	1.89	2.91	0.79	1.675	0.62	PS03060	8.61	D30D*X06S
1"	6.00	11.57	6.16	3.62	2.32	3.52	0.79	1.810	0.87	PS04560	12.09	E30D*X06S
1 1/2"	6.89	14.06	7.79	4.33	2.83	4.40	1.18	2.165	1.38	PS9060	22.74	G30D*X06S
2"	7.48	14.65	8.58	4.73	3.23	5.2	1.18	2.365	1.87	PS12060	34.47	H30D*X06S

VALVE FEATURES

- 3-A approved
- Sanitary clamp end connections
- Seats with cavity fillers to avoid media entrapment
- Full port bore
- ISO 5211 direct mount actuator mounting pad
- Blow-out proof stem
- Electric or pneumatic actuators available
- Solenoid valves and limit switches available

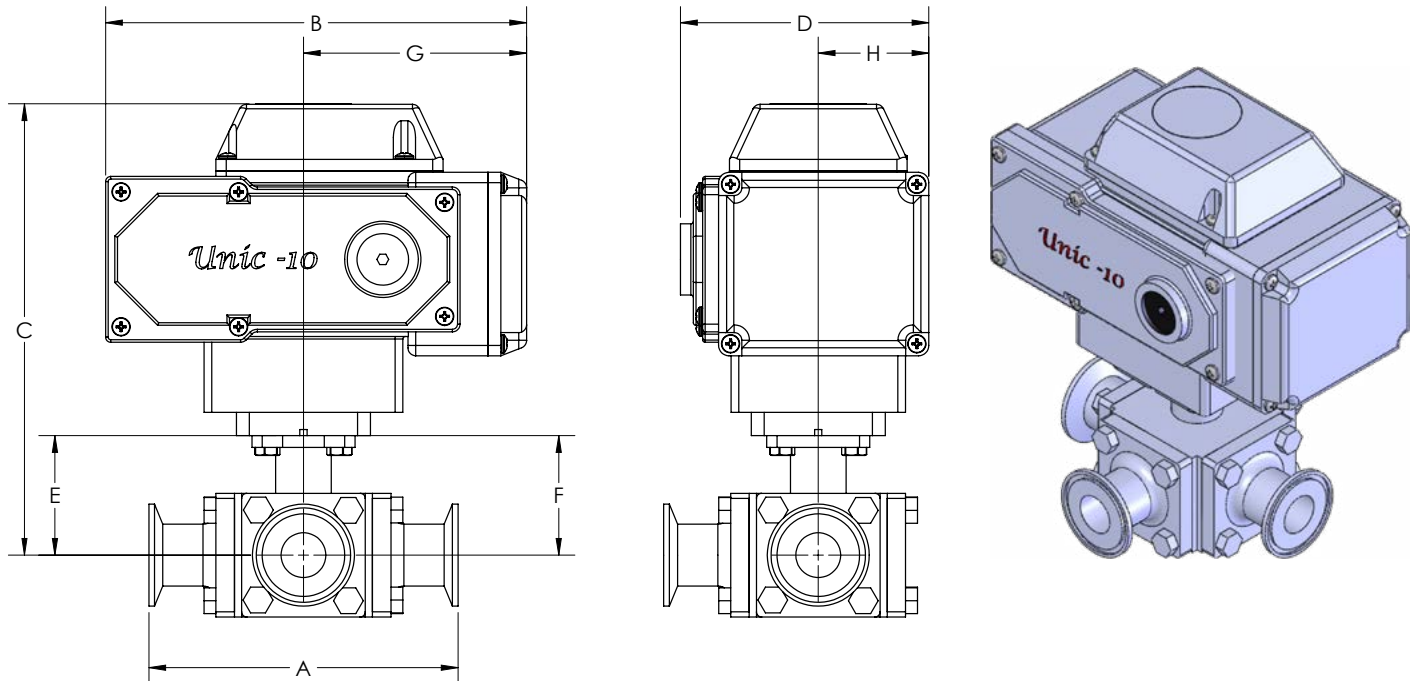
PNEUMATIC ACTUATOR FEATURES

- O Series spring return dual scotch yoke actuator.
- Corrosion resistant coating
- NAMUR solenoid mounting pad, ISO 5211 mounting standard
- Visual position indicators
- High duty cycle
- Permanent lubrication
- Temperature range: -4°F to 175°F

30DX_XK4

Stainless steel, 3-way ball valves with electric actuator, NEMA 4, 4X

(Sanitary clamp end connections with filled cavities, actuators are sized for 400psi pressure differential)



DIMENSIONS, WEIGHTS & SPECIFICATIONS

Size	A	B	C	D	E	F	G	H	I	Actuator	Wt (lbs.)	Model No.
80 psi Minimum Actuator Air Supply = 85												
1/2"	4.65	6.25	5.826	4.50	1.75	2.68	3.125	2.25	0.37	UNIC05-AC120-L-SH-ISO	7.9	C30D* XK4
3/4"	5.00	6.25	5.966	4.50	1.89	2.91	3.125	2.25	0.62	UNIC05-AC120-L-SH-ISO	8.6	D30D* XK4
1"	6.00	6.25	6.396	4.50	2.32	3.52	3.125	2.25	0.87	UNIC05-AC120-L-SH-ISO	11.2	E30D* XK4
1 1/2"	6.89	6.25	6.900	4.50	2.83	4.40	3.125	2.25	1.38	UNIC05-AC120-L-SH-ISO	17.0	G30D* XK4
2"	7.48	8.17	9.630	4.82	3.23	5.20	4.085	2.41	1.87	UNIC10-AC120-L-SH-ISO	29.6	H30D* XK4
3"	10.24	8.17	12.220	4.82	4.94	6.95	4.085	2.41	2.87	UNIC20-AC120-L-SH-ISO	60.8	J30D* XK4
4"	13.00	10.10	14.560	6.16	7.28	11.28	5.050	3.08	3.83	UNIC20-AC120-L-SH-ISO	136.5	K30D* XK4

VALVE FEATURES

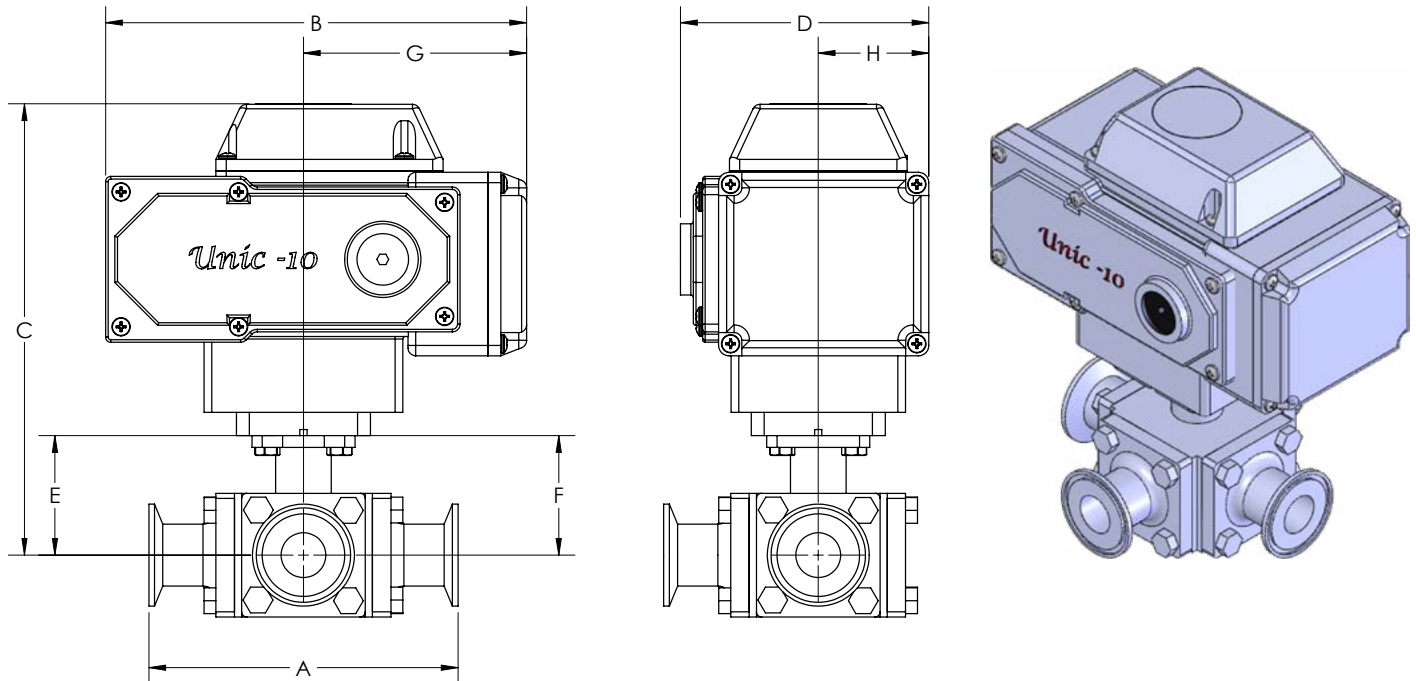
- 3-A approved
- Sanitary clamp end connections
- Seats with cavity fillers to avoid media entrapment
- Full port bore
- ISO 5211 direct mount actuator mounting pad
- Blow-out proof stem
- Electric or pneumatic actuators available
- Solenoid valves and limit switches available

ELECTRIC ACTUATOR FEATURES

- K Series electric actuator
- Most voltages available
- Quarter turn: 0-90° rotation
- NEMA 4/4X certified by UL labs
- ISO 5211 mounting standard
- Visual position indicators
- Self-locking drive train
- Mounts in any direction
- 1/2" NPT conduit connection
- CSA-NRTL/C and CE certified
- Temperature range: 0°F to 160°F

30DX_XK4

Stainless steel, 3-way ball valves with electric actuator, NEMA 4, 4X, Modulating 4-20mA
(Sanitary clamp end connections with filled cavities, actuators are sized for 400psi pressure differential)



DIMENSIONS, WEIGHTS & SPECIFICATIONS

Size	A	B	C	D	E	F	G	H	I	Actuator	Wt (lbs.)	Model No.
80 psi Minimum Actuator Air Supply = 85												
1/2"	4.65	6.5	5.826	4.50	1.75	2.68	3.25	2.25	0.37	NUCOM-Z-AC120-ISO-420	9.0	C30D* XK4
3/4"	5.00	6.5	5.966	4.50	1.89	2.91	3.25	2.25	0.62	NUCOM-Z-AC120-ISO-420	9.7	D30D* XK4
1"	6.00	8.17	5.917	4.50	2.32	3.52	4.085	2.25	0.87	NUCOM-10NS-AC120-ISO-420	16.7	E30D* XK4
1 1/2"	6.89	8.17	6.906	4.50	2.83	4.40	4.085	2.25	1.38	NUCOM-10NS-AC120-ISO-420	22.5	G30D* XK4
2"	7.48	8.17	9.630	4.82	3.23	5.20	4.085	2.41	1.87	NUCOM-10NS-AC120-ISO-420	29.6	H30D* XK4
3"	10.24	10.10	12.220	4.82	4.94	6.95	5.05	2.41	2.87	NUCOM-10NM-AC120-ISO-420	62.3	J30D* XK4
4"	13.00	10.10	14.560	6.16	7.28	11.28	5.05	3.08	3.83	NUCOM-10NM-AC120-ISO-420	138.0	K30D* XK4

VALVE FEATURES

- 3-A approved
- Sanitary clamp end connections
- Seats with cavity fillers to avoid media entrapment
- Full port bore
- ISO 5211 direct mount actuator mounting pad
- Blow-out proof stem
- Electric or pneumatic actuators available
- Solenoid valves and limit switches available

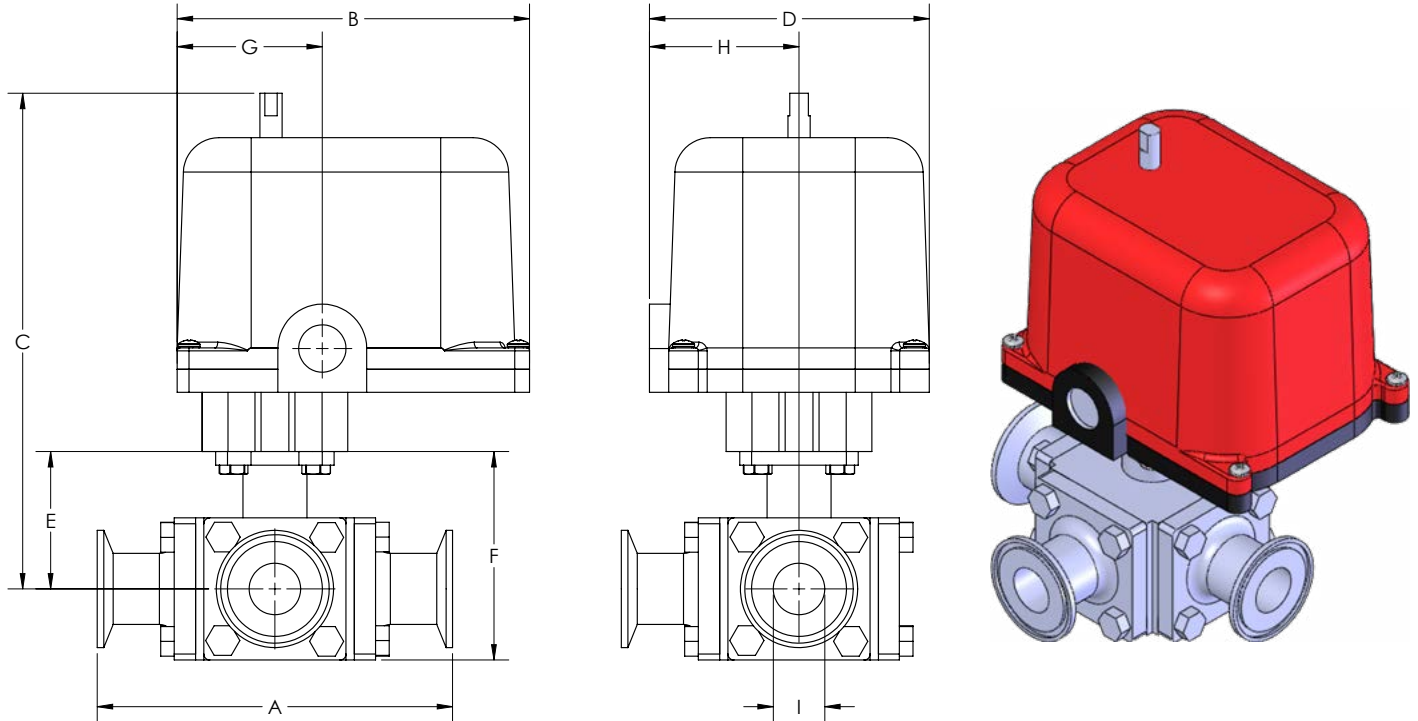
ELECTRIC ACTUATOR FEATURES

- K Series electric actuator
- Most voltages available
- Quarter turn: 0-90° rotation
- NEMA 4/4X certified by UL labs
- ISO 5211 mounting standard
- Visual position indicators
- Self-locking drive train
- Mounts in any direction
- 1/2" NPT conduit connection
- CSA-NRTL/C and CE certified
- Temperature range: 0°F to 160°F
- [Modulating Info](#)

30DX_XR4

Stainless steel, 3-way ball valves with electric actuator, NEMA 4, 4X

(Sanitary clamp end connections with filled cavities, actuators are sized for 400psi pressure differential)



DIMENSIONS, WEIGHTS & SPECIFICATIONS

Size	A	B	C	D	E	F	G	H	I	Actuator	Wt (lbs.)	Model No.
80 psi Minimum Actuator Air Supply = 8S												
1/2"	4.65	5.95	7.05	4.725	1.75	2.68	2.975	2.525	0.37	R300*	9.5	C30D*XR4
3/4"	5.00	5.95	7.19	4.725	1.89	2.91	2.975	2.525	0.62	R300*	10.2	D30D*XR4
1"	6.00	5.95	7.62	4.725	2.32	3.52	2.975	2.525	0.87	R300*	12.8	E30D*XR4
1 1/2"	6.89	5.95	8.13	4.725	2.83	4.40	2.975	2.525	1.38	R300*	18.6	G30D*XR4
2"	7.84	5.95	8.53	4.725	3.23	4.2	2.975	2.525	1.87	R600*	25.7	H30D*XR4

VALVE FEATURES

- 3-A approved
- Sanitary clamp end connections
- Seats with cavity fillers to avoid media entrapment
- Full port bore
- ISO 5211 direct mount actuator mounting pad
- Blow-out proof stem
- Electric or pneumatic actuators available
- Solenoid valves and limit switches available

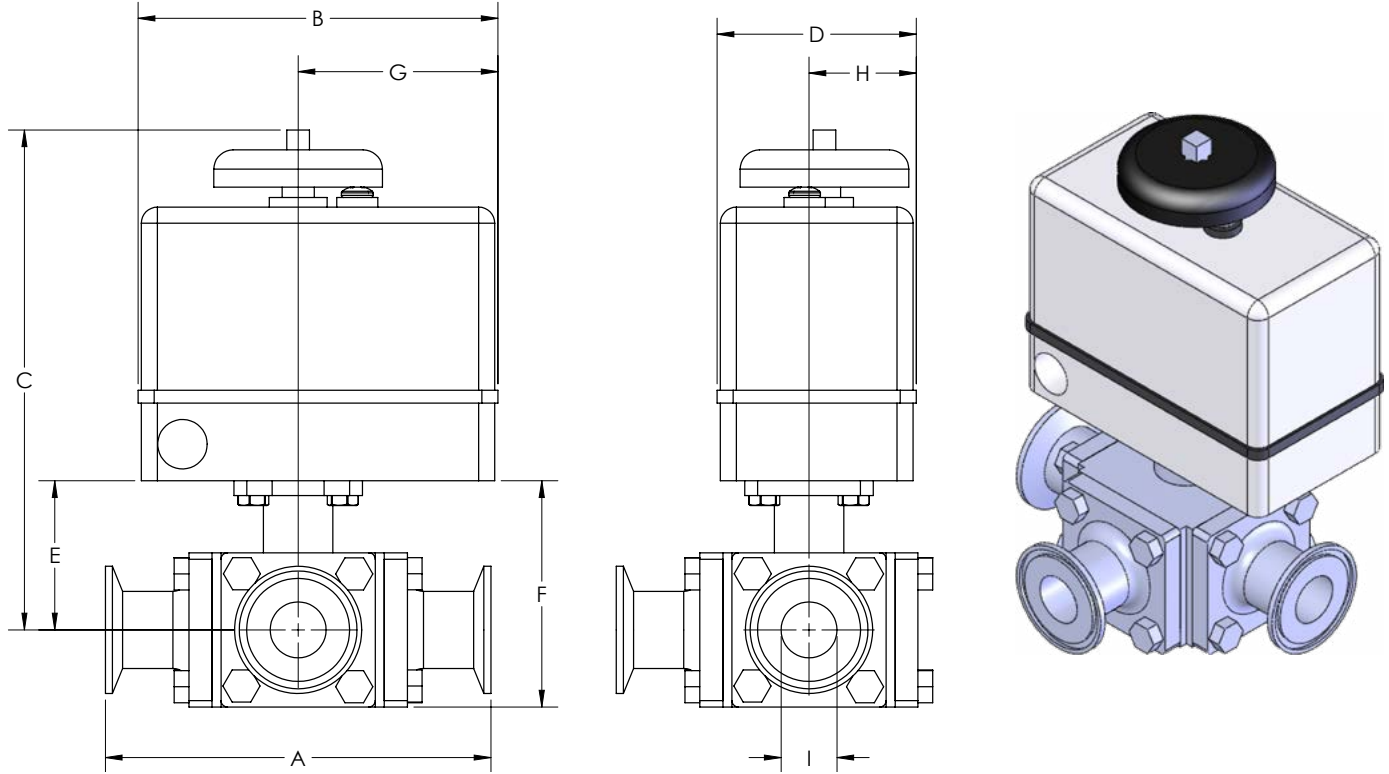
PNEUMATIC ACTUATOR FEATURES

- R Series electric actuator
- NEMA 4, 4X
- Voltages available: 120vAC, 12vDC, 24vDC
- Duty cycle: 25% at 120vAC, 100% at DC units
- ISO 5211 universal mounting
- Manual override
- Permanent lubrication
- Visual position indicator
- Temperature range: 0°F to 150°F

30DX_XV4

Stainless steel, 3-way ball valves with electric actuator, NEMA 4, 4X

(Sanitary clamp end connections with filled cavities, actuators are sized for 400psi pressure differential)



DIMENSIONS, WEIGHTS & SPECIFICATIONS

Size	A	B	C	D	E	F	G	H	I	AC Actuator	DC Actuator	Wt (lbs.)	Model No.
80 psi Minimum Actuator Air Supply = 85													
1/2"	4.65	5.50	6.5	3.00	1.75	2.68	3.06	1.5	0.37	EV1S1V1	EV1S3V*	8.5	C30D*XV4
3/4"	5.00	5.50	6.64	3.00	1.89	2.91	3.06	1.5	0.62	EV1S1V1	EV1S3V*	9.2	D30D*XV4
1"	6.00	5.50	7.07	3.00	2.32	3.52	3.06	1.5	0.87	EV3S2V1	EV3S3V*	11.8	E30D*XV4
1 1/2"	6.89	5.50	7.58	3.00	2.83	4.40	3.06	1.5	1.38	EV3S2V1	EV3S3V*	17.6	F30D*XV4

VALVE FEATURES

- 3-A approved
- Sanitary clamp end connections
- Seats with cavity fillers to avoid media entrapment
- Full port bore
- ISO 5211 direct mount actuator mounting pad
- Blow-out proof stem
- Electric or pneumatic actuators available
- Solenoid valves and limit switches available

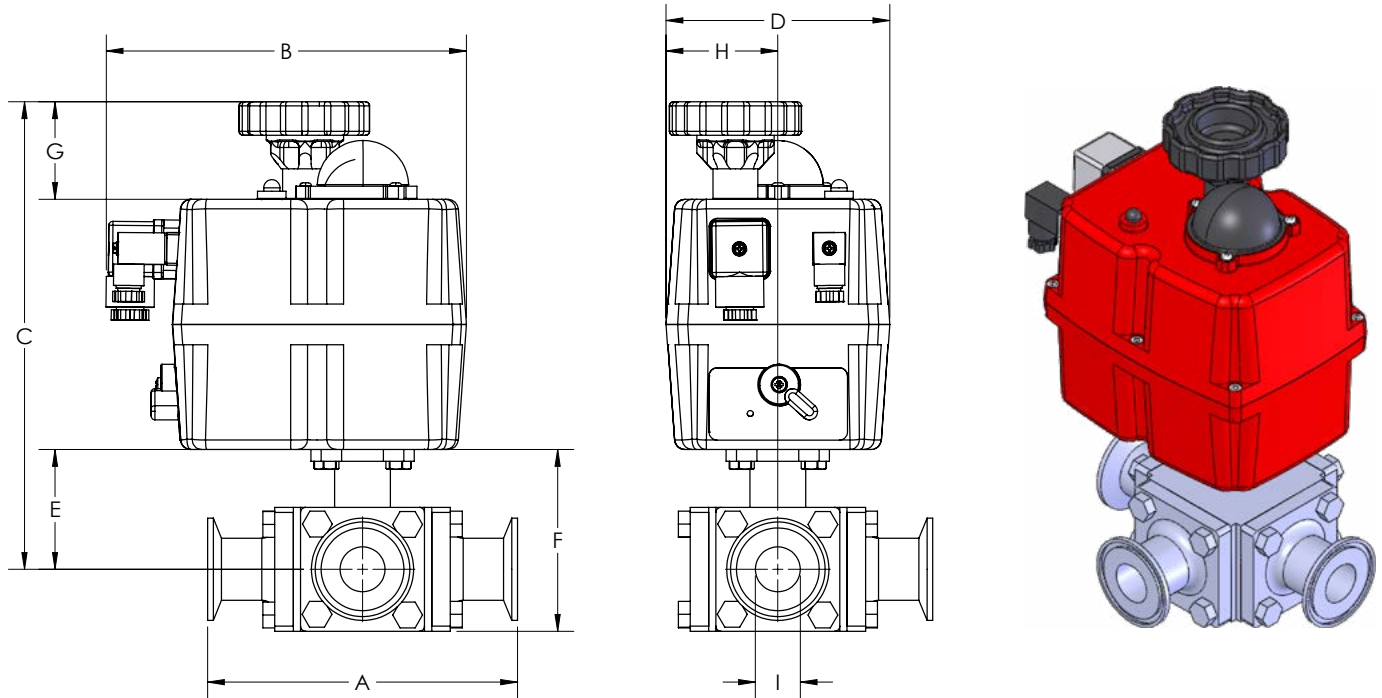
PNEUMATIC ACTUATOR FEATURES

- V4 Series electric actuator
- NEMA 4, 4X
- Voltages available: 120vAC, 220vAC, 24vAC, 12vDC, 24vDC.
- Duty cycle:
 - 25% for 120vAC (EV1)
 - 75% for 120vAC (EV3)
 - 100% for DC units
- ISO 5211 universal mounting
- Manual override
- Permanent lubrication
- Visual position indicator
- Temperature range: 0°F to 160°F

30DX_XS4MV

Stainless steel, 3-way ball valves with multi-voltage electric actuator, IP67

(Sanitary clamp end connections with filled cavities, actuators are sized for 400psi pressure differential)



DIMENSIONS, WEIGHTS & SPECIFICATIONS

Size	A	B	C	D	E	F	G	H	I	Actuator	Wt (lbs.)	Model No.
80 psi Minimum Actuator Air Supply = 85												
1/2"	4.65	6.93	8.49	4.32	1.75	2.68		2.16	0.37	S40170MV**	7.5	C30D*XS4MV**
3/4"	5.00	6.93	8.62	4.32	1.89	2.91		2.16	0.62	S40170MV**	8.2	D30D*XS4MV**
1"	6.00	6.93	9.05	4.32	2.32	3.52		2.16	0.87	S40170MV**	10.8	E30D*XS4MV**
1 1/2"	6.89	6.93	9.56	4.32	2.83	4.40		2.16	1.38	S40300MV**	16.8	G30D*XS4MV**
2"	7.48	6.93	10.95	4.32	3.23	5.20		2.16	1.87	S40480MV**	25.0	H30D*XS4MV**
3"	10.24	9.25	14.94	8.42	4.94	6.95		4.21	2.87	S42600MV**	55.8	J30D*XS4MV**
4"	13.00	9.25	17.28	8.42	7.28	11.28		4.21	3.83	S42600MV**	131.5	K30D*XS4MV**

VALVE FEATURES

- 3-A approved
- Sanitary clamp end connections
- Seats with cavity fillers to avoid media entrapment
- Full port bore
- ISO 5211 direct mount actuator mounting pad
- Blow-out proof stem
- Electric or pneumatic actuators available
- Solenoid valves and limit switches available

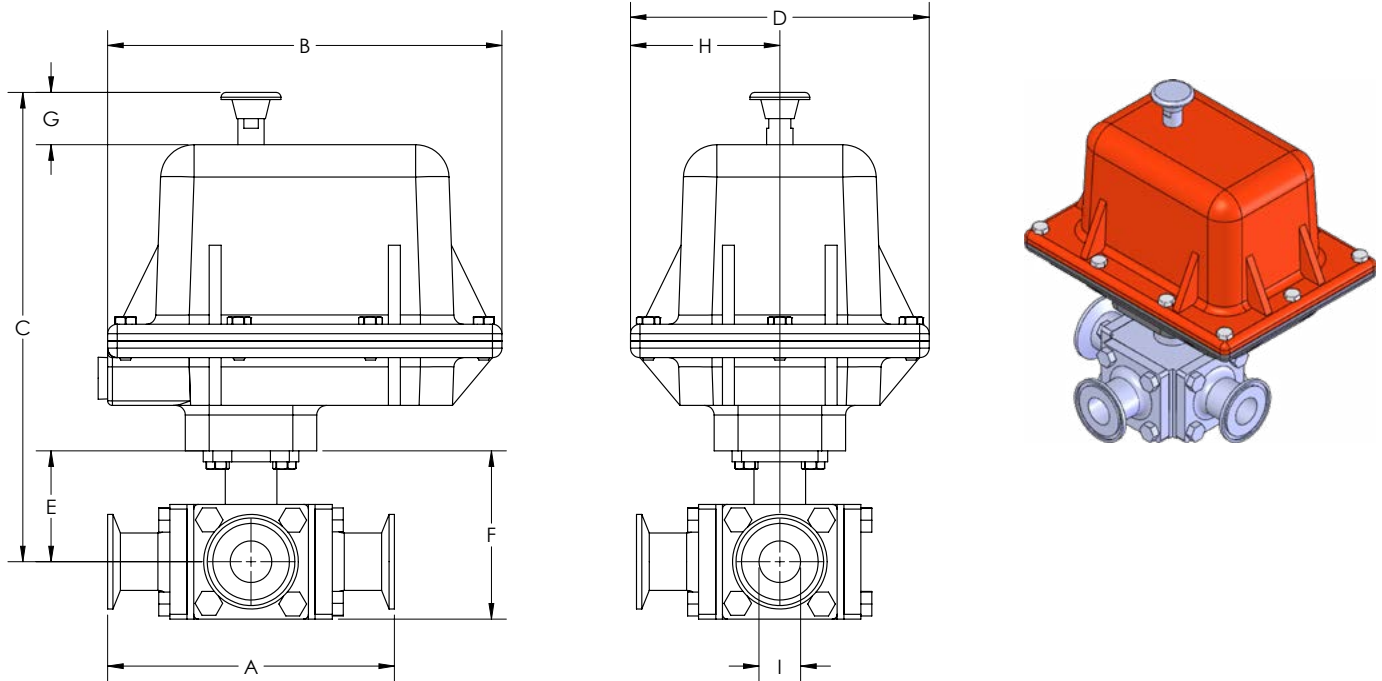
PNEUMATIC ACTUATOR FEATURES

- S4 Series multi-voltage, reversible actuator
12 to 24vAC/DC or 85 to 240vAC/DC
- Internal thermostat controlled anti-condensation heater
- Isolated end of travel limit switches
- Manual override for emergency hand operation
- Electronic torque limiter
- Visual domed position indicator
- Temperature range: -4°F to 175°F
- Auto-voltage sensing reduces field wiring mistakes
- External wiring connection with DIN Plugs, no need to open unit for field wiring
- ISO5211 mounting flange
- CE marked.

30DX_XB7

Stainless steel, 3-way ball valves with multi-voltage electric actuator, IP67

(Sanitary clamp end connections with filled cavities, actuators are sized for 400psi pressure differential)



DIMENSIONS, WEIGHTS & SPECIFICATIONS

Size	A	B	C	D	E	F	G	H	I	Actuator	Wt (lbs.)	Model No.
80 psi Minimum Actuator Air Supply = 85												
1/2"	4.65	8.25	9.25	6.25	1.75	2.68	1.5	3.125	0.37	EM300F-10-C7-*001	15.5	C30D*XB7
3/4"	5.00	8.25	9.39	6.25	1.89	2.91	1.5	3.125	0.62	EM300F-10-C7-*001	16.2	D30D*XB7
1"	6.00	8.25	9.82	6.25	2.32	3.52	1.5	3.125	0.87	EM300F-10-C7-*001	18.8	E30D*XB7
1 1/2"	6.89	8.25	10.33	6.25	2.83	4.40	1.5	3.125	1.38	EM300F-10-C7-*001	24.6	G30D*XB7
2"	7.48	8.25	10.73	6.25	3.23	5.20	1.5	3.125	1.87	EM300F-10-C7-*001	31.7	H30D*XB7
3"	10.24	9.75	14.44	7.75	4.94	6.95	1.5	3.875	2.87	EM500F-30-C7-*001	62.3	J30D*XB7
4"	13.00	14.00	26.68	10.00	7.28	11.28	1.5	5.000	3.83	EM810F-18-C7-*001	280.0	K30D*XB7

VALVE FEATURES

- 3-A approved
- Sanitary clamp end connections
- Seats with cavity fillers to avoid media entrapment
- Full port bore
- ISO 5211 direct mount actuator mounting pad
- Blow-out proof stem
- Electric or pneumatic actuators available
- Solenoid valves and limit switches available

PNEUMATIC ACTUATOR FEATURES

- B7 Series electric actuator
- Actuator speed: 15 sec.
- NEMA 4, 4x, 7 and 9; CSA approved
- Weatherproof
- Class I Groups C and D, Div. 1
- Class II Groups E, F and G
- (2) 1/2" NPT conduit entries
- Manual override
- Position indicator
- CSA certified
- Temperature range: 0°F to 160°F